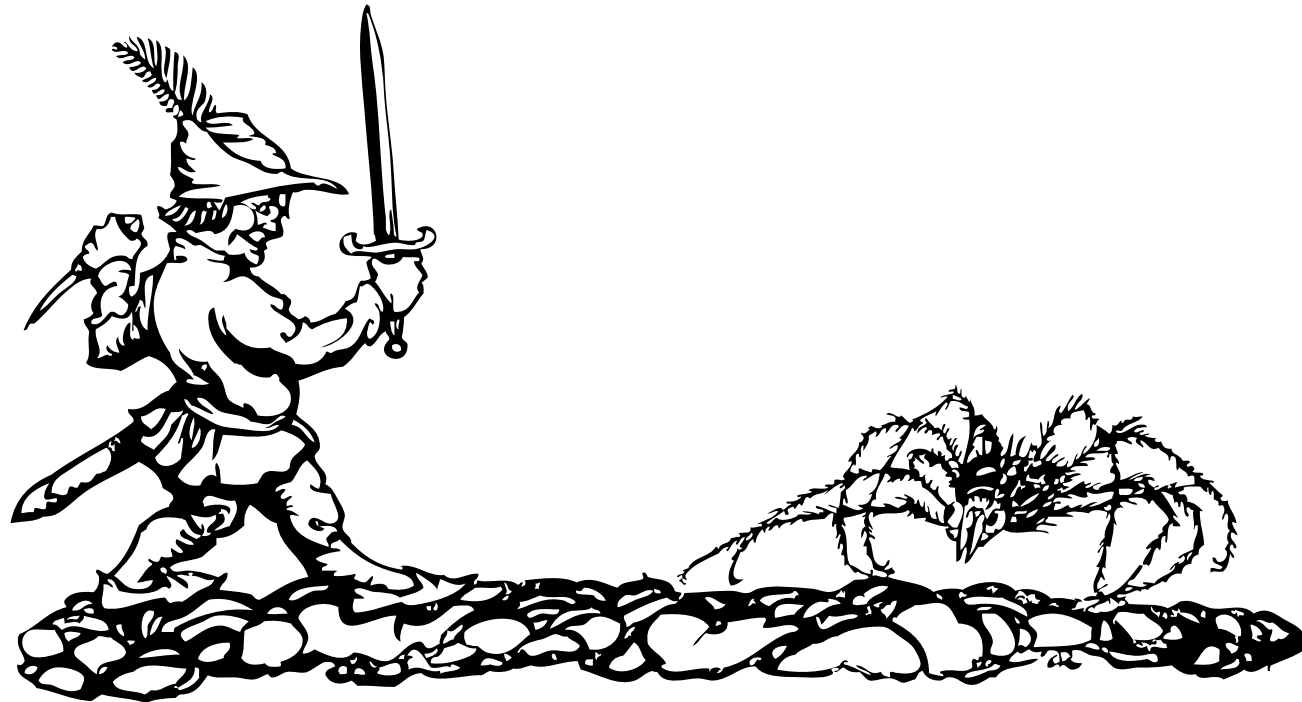
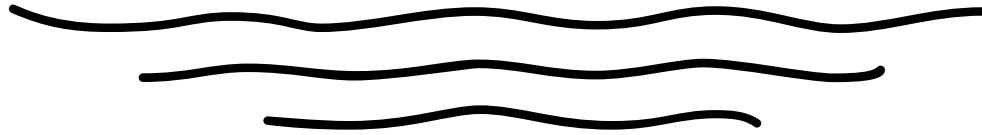


# SWORDS & WIZARDRY

## LIGHT



# CREATING CHARACTERS

## Ability Scores

The standard way to create ability scores is to roll 3d6 (three six sided dice) in the order listed below.

- Strength** Fighters can use their Strength bonus to modify their to-hit and damage results in melee
- Intelligence** Magic-Users can use their Int bonus to give their target a penalty to their save
- Wisdom** Clerics with a 15 or higher Wisdom gain an extra 1st level spell
- Constitution** You can use a Constitution bonus to gain additional hit points on each HD. **Hit Die (HD) are rolled with a d6**
- Dexterity** You can use your Dexterity bonus to modify your “to-hit” number with ranged (also called “missile”) weapons and modify your character’s armor class
- Charisma** Your character’s personality and likability. Characters with a Charisma of 15+ start the game with a:

**Torchbearer** AC: 9[10] Move: 12  
Attacks: None Special: Carry torch

## Attribute Bonus

Attributes scores of 15 or more have a bonus of +1.

## Armor Class

Armor Class (AC) rates how difficult it is to hit. It is expressed as X[XX]. The first number represents your AC (a lower AC is more difficult to hit). The second number in brackets is the number required to hit an opponent with that AC using a d20.

*Example: An unarmored man would be AC9[10], while one wearing leather armor would be 7[12].*

## Levels

Characters gain levels by completing adventures. After completing two adventures, a character progresses to 2nd level in their chosen class. Upon completing three more adventures, a character progresses to 3rd level. For advancement beyond 3rd level, please refer to the full *Swords & Wizardry: Complete* rules.

## Character Races

In addition to Humans, Elves populate the great forests, Dwarves carve their halls and mines into the heart of the earth, and Halflings reside in the comfortable hill-houses of their bucolic shires.

**Dwarves** progress as fighters or thieves and gain an extra +1 to hit and damage when fighting orcs and goblins. Dwarves receive a defensive bonus in combat because they are hard to hit (-4 against ogres). Dwarves get +4 on save vs. magic and +1 on Saving Throws vs. death magic & poisons.

**Elves** may use either the Fighter, Magic-User or Thief class. Elves gain an extra +1 when fighting goblins, orcs, intelligent undead, and lycanthropes. Elves are also immune to paralysis caused by undead such as ghouls. Elves get +2 on Saving Throws vs. magic.

**Halflings** are awarded a defensive bonus in combat because they are hard to hit (-4 against ogres). Halflings receive +2 when firing missile weapons in combat. Halflings may be Fighters or Thieves.

**Humans** may be any class.

## Equipment & Adventurer Packs

Each starting character gets to choose one of the following:

### Pack 1

Backpack, bedroll, flint and steel, 6 torches (burn 1 hr and shed light 30'), 50' Rope, crowbar, 7 days rations, and a water skin

### Pack 2

Backpack, bedroll, flint and steel, hooded lantern with 2 pints lantern oil (each pint burns for 4 hrs and sheds light 30'), hammer, 12 iron spikes, 10' pole, 7 days rations and a water skin

### Armor Table

Armor Type	Effect on AC	Cost
Chain	-4 [+4]	75 gp
Leather	-2 [+2]	5 gp
Plate	-6 [+6]	100 gp
Shield	-1 [+1]	15 gp



# CHARACTER CLASSES

## The Fighter

*A battle-hardened warrior that trusts in arms and armor.*

**Hit Dice:** 1+1 HD at 1st level, a 2nd level HD, at 2nd level and a 3rd HD at 3rd level.

**Saving Throw:** 16 at 1st level, 15 at 2nd level, and 14 at 3rd level.

**Basic Hit Bonus (BHB):** +1 at 2nd level and +2 at 3rd level.

Fighters start with either Long Sword or Battle Axe (1d6 damage) and Bow with Chain Armor and Shield AC 4[15] or Two-Handed Sword (1d6+1) and Crossbow with Chain Armor AC 5[14].

Fighters have no armor or weapon restrictions. Fighters get one attack per level each round against foes of 1 Hit Die (HD) or fewer. Fighters also get +1 on Saving Throws vs. death and poisons.

## The Thief

*A figure in the shadows, an expert in stealth and delicate tasks.*

**Hit Dice:** 1HD at 1st level, 2HD at 2nd level, and 2HD+1 at 3rd level

**Saving Throw:** 15 at 1st, 14 at 2nd, and 13 at 3rd

Thieves may wear only Leather Armor. Thieves use any weapon. Thieves start with either Long Sword (1d6) and Dagger (1d6) or Club (1d6) and Short Sword (1d6-1) with a suit of Leather Armor AC 7[12].

Thieves have class abilities as follows:

**Backstab** – When attacking with surprise and from behind the thief attacks at +4 to hit and x2 damage

**Hear Sounds** – Thieves have a 3 in 6 chance to hear and identify noise through closed doors

**Read Normal Languages** – Thieves have a 4 in 6 chance to read normal (non-magical) languages

**Climb Walls** – Thieves have a 5 in 6 chance to climb walls and cliffs

**Thief Skills** – Thieves have a 1 in 6 chance to succeed at Finding/Removing Traps, Opening Locks, Hiding in Shadows/Move Silently. Dwarves have a 2 in 6 chance to Find/Remove Traps, Elves have a 2 in 6 chance to Hide in Shadows/Move Silently, and Halflings have a 2 in 6 chance to Open Locks and Hide in Shadows/Move Silently.

## The Cleric

*An armored priest who serves Good/Law or Evil/Chaos.*

**Hit Dice:** 1HD at 1st level, a 2nd HD at 2nd level, a 3rd HD at 3rd level

**Saving Throw:** 14 at 1st level, 13 at 2nd level, and 12 at 3rd level

**Basic Hit Bonus (BHB):** +1 at 3rd level

Clerics start with either Mace or Hammer (1d6 damage) with Chain Armor and Shield AC 4[15].

Clerics have no armor restrictions, but may only use blunt weapons (club, flail, mace). Clerics get +2 on Saving Throws vs. death and poisons.

Starting at 2nd level Clerics can cast spells. They get their first spell at 2nd level and another spell at 3rd level.

## Cleric spells

### Cure Wounds I

**Range:** Touch

**Duration:** Immediate

This spell cures 1d6+1 hit points of damage.

### Detect Evil (Good)

**Range:** 120 ft

**Duration:** 60 minutes

The caster detects creatures of Evil, evil enchantments, intentions, thoughts, or auras. The reverse of the spell, Detect Good, works the same except it detects creatures of Good.

### Spiritual Protection

**Range:** Caster only

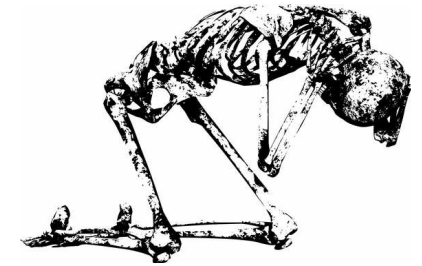
**Duration:** 2 hours

Creates a magical field of protection around the caster to block out creatures with ill intent, who suffer -1 penalty to hit, and the caster gains +1 on Saving Throws against such attacks.

## Turning

Clerics have the ability to turn undead, causing them to flee.

When a turning attempt is made, roll 3d6 and consult the Turning Table for the result. If the number rolled is equal to or greater than the number shown on the table, all undead creatures of the targeted type are turned and will flee for 3d6 rounds, or will cower helplessly if they can't flee.



### Turning Table

Undead Type	1	2	3
Skeleton	10	7	4
Ghoul/Zombie	13	10	7
Shadow/Wight	15	13	10
Wraith	17	15	13

# The Magic-User

*A mysterious student of arcane powers and spell casting.*

**Hit Dice:** 1 HD at 1st level, +1 HP at 2nd level, and a 2nd HD at 3rd level

**Saving Throw:** 15 at 1st level, 14 at 2nd level, and 13 at 3rd level

Magic-Users (MU) may only use daggers or staves (choose one at 1st level) and are not allowed the use of armor. MUs get +2 on Saving Throws vs. magic. The MU starts with a book of two spells, one chosen and one randomly awarded. Reading from the book, the MU presses his chosen spell into his mind.

Once a prepared spell is cast, it disappears from the MU's ability to cast (until it is prepared again). It is possible to prepare a spell multiple times using the available "slots" in the MU's memory. If the MU finds scrolls of spells, he can copy them into his spell book.

Level 1 MUs get one level 1 spell, Level 2 MU get 2 level 1 spells. At Level 3 MUs get three level 1 and one level 2 spell (for a total of four spells).

## Magic-User spells - Level 1

### Charm Person

**Range:** 30 ft

**Duration:** Until dispelled

This spell affects living bipeds of human size or smaller. If the spell succeeds (save allowed), the creature falls under the caster's influence.

### Detect Magic

**Range:** 60 ft

**Duration:** 20 minutes

Caster can perceive the presence of magic.

### Light I

**Range:** 60 ft

**Duration:** 1 hour+10 min/level

The target person or object (at a range of up to 120 ft) produces light about as bright as a torch, to a radius of 20 ft.

### Magic Missile

**Range:** 150 ft

**Duration:** Instantaneous

A magic dart flies where the caster directs, hitting the target, automatically causing 1d6 damage. There is no saving throw.

### Sleep

**Range:** 240 ft

**Duration:** Referee's discretion

This spell puts 2d6+3 HD enemies into an enchanted slumber. It affects creatures based on their hit dice.

## Magic-User spells - Level 2

### Knock - Lock

**Range:** Close

**Duration:** Perm. until dispelled

The targeted door, gate, or portal can be opened or locked by this spell. A locked target is unlocked and opened (including those locked by this spell). Targets locked by this spell can be unlocked by this spell or broken by brute force (GM's discretion).

### Invisibility

**Range:** 240 ft

**Duration:** Until dispelled or an attack is made

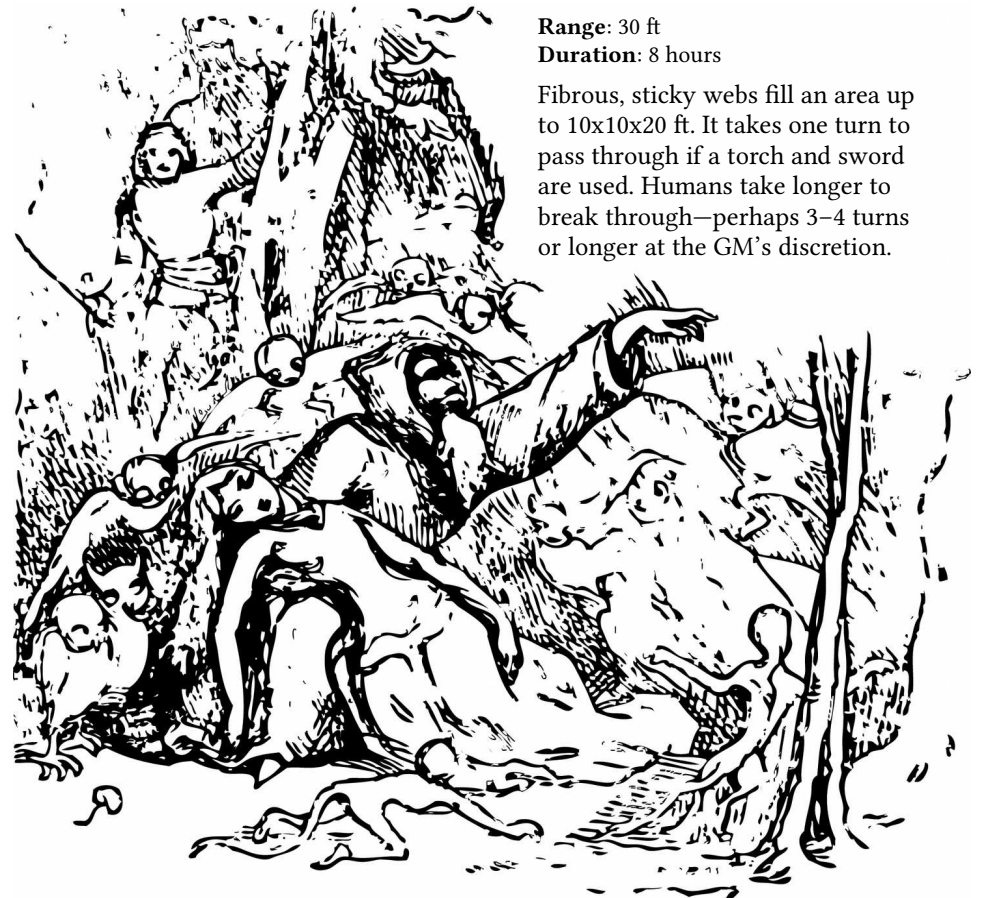
The object of this spell becomes invisible and cannot be seen. Attacks against an invisible creature are made at -4 to hit. If the invisible creature makes an attack, the invisibility is ended, otherwise it lasts until removed by the caster.

### Web

**Range:** 30 ft

**Duration:** 8 hours

Fibrous, sticky webs fill an area up to 10x10x20 ft. It takes one turn to pass through if a torch and sword are used. Humans take longer to break through—perhaps 3-4 turns or longer at the GM's discretion.



# PLAYING THE GAME

## Time

A turn represents ten minutes, and a combat round is 1 minute.

## Movement Rate

Base movement rate for all races is in terms of feet per combat round. Dwarves and Halflings move at 9ft. Humans and Elves move at 12ft. Careful movement halves the rate, running doubles it.

## Damage and Death

When a target is hit, the amount of damage is deducted from their hit points. When these hit points reach zero, the target dies.

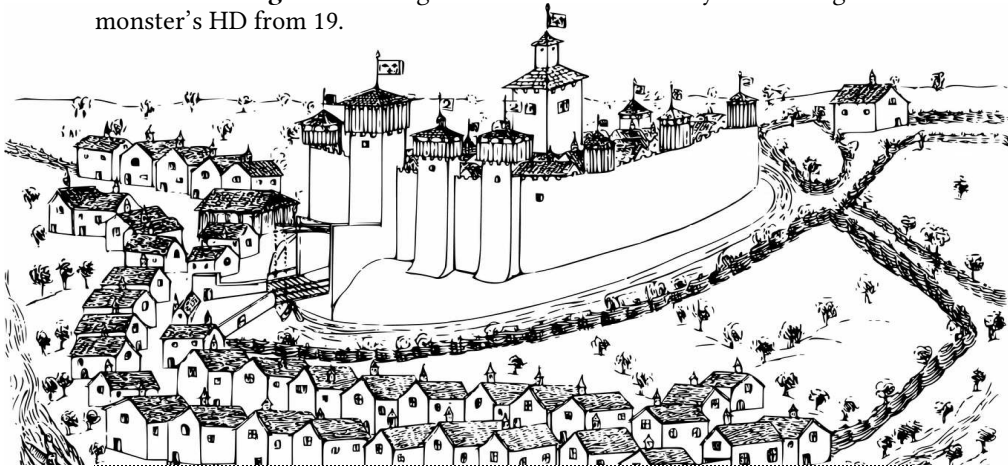
## Healing

In addition to magical means of restoring hit points, a character will recover 1 hit point per day of uninterrupted rest.

## Saving Throws

A spell or other hazard may require you to make a Saving Throw. A successful Saving Throw means that the individual avoids the threat or lessens its effect. Each character class has a Saving Throw target number based on level. Roll that number or higher to succeed.

**Monster Saving Throw**—target number is calculated by subtracting the monster's HD from 19.



## Combat

When the party of adventurers comes into contact with enemies, the order of events is as follows:

1. *Determine Initiative.*
2. *Party with Initiative acts first (casting spells, attacking, etc.) and results take effect.*
3. *Party that lost Initiative acts, and their results take effect.*
4. *The round is complete; keep turn order for the next round if the battle has not been resolved.*

## Determine Initiative

At the beginning of a combat round, each side rolls Initiative on a d6—high roll wins. The winning side acts first—moving, attacking, and casting spells. The losing side takes damage and casualties, and then gets its turn. Initiative rolls may result in a tie. When this happens, both sides are considered to be acting simultaneously.

## Melee Attack

A melee attack is an attack with hand-held weapons such as a sword, spear, or dagger. Two combatants within ten feet of each other are considered to be “in combat.”

## Missile Attack

Missile attacks are attacks with ranged weapons such as a bow or sling. When using missiles to attack into a melee, randomly determine friend or foe as your target.

## The Attack Roll

To attack with a weapon, the player rolls a d20 and adds any bonuses to the result. The total attack roll hits if equal to or higher than the number shown on the table below.

Monster attack—attack as a level 1 Fighter, but add their HD to the attack roll. Monsters of less than 1 HD attack as 1st level Fighters.

# MONSTERS



## Beetles, Giant Fire

AC: 4[15] HD: 1+3 Move: 12  
Attacks: Bite (2d6)

A giant fire beetle's light-glands glow reddishly and continue to give off light for 1d6 days after they are removed (lights a 10 ft radius).

## Bugbears

AC: 5[14] HD: 3+1 Move: 9  
Attacks: Weapon / bite (1d6)  
Special: Surprise opponents (1-3 on 1d6 roll)

These goblin-like humanoids are large and hairy. They will surprise alert opponents with a roll of 1-3 on a d6 (50%).

## Dryads

AC: 9[10] HD: 2 Move: 12  
Attacks: Dagger (1d6)  
Special: Charm Person

Dryads are beautiful female tree spirits, and do not venture far from their home trees. They can cast a charm person spell with a -2 Saving Throw.

## Ghouls

AC: 6[13] HD: 2 Move: 9  
Attacks: Claw (1d6 + paralysis)  
Special: Immunities, paralysis

Any hit from a ghoul requires a Save or the victim becomes paralyzed for 3d6 turns.

## Gnolls

AC: 5[14] HD: 2 Move: 9  
Attacks: Bite (1d6)

Gnolls are tall humanoids with hyena-like heads.

## Goblins

AC: 7[12] HD: 1-1 Move: 9  
Attacks: Weapon (1d6)  
Special: -1 "to-hit" in sunlight

Goblins are small creatures (4 ft tall or so) that inhabit dark woods and underground caverns.

## Hobgoblins

AC: 5[14] HD: 1+1 Move: 9  
Attacks: Weapon (1d6)

Hobgoblins are simply large goblins.

## Kobolds

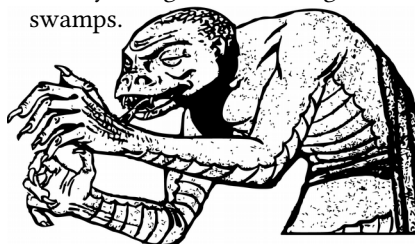
AC: 6[13] HD: ½ Move: 6  
Attacks: Weapon (1d6-1)

Kobolds are subterranean, goblin-like humanoids.

## Lizardmen

AC: 5[14] HD: 2+1 Move: 6  
Attacks: Claws (1d6) (12 swim)  
Special: Underwater

Lizardmen are reptilian humanoids, usually living in tribal villages in swamps.



## Ogres

AC: 5[14] HD: 4+1 Move: 9  
Attacks: Weapon (1d6+2)

Ogres are normally quite stupid.

## Orcs

AC: 6[13] HD: 1 Move: 12  
Attacks: Weapon (1d6)

Orcs are stupid, brutish humanoids that gather in tribes.

## Rats, Giant

AC: 7[12] HD: 1-1 Move: 12  
Attacks: Bite (1d6)

Giant rats are found in dungeons, and are about the size of a cat.

## Skeletons

AC: 8[11] or 7 [12] with shield  
HD: 1 Move: 12  
Attacks: Weapon (1d6)

Skeletons are animated bones of the dead.

## Spiders, Giant

AC: 6[13] HD: 2+2 Move: 18  
Attacks: Bite (1d6)  
Special: See Below

Giant spiders spin web-traps as per the Magic-User spell Web. Targets require a saving throw to avoid becoming stuck. Those who make their Saving Throw can fight and move (5 ft per round) in the webs. Giant spiders surprise on a roll of 1-5, and can hide in shadows.

## Trolls

AC: 4[15] HD: 6+3 Move: 12  
Attacks: Claw (1d6)  
Special: Regenerates

Trolls regenerate, healing 3 hit points per round. The only way to utterly kill a troll is to submerge it in acid or burn it.

## Worgs

AC: 6[13] HD: 4 Move: 18  
Attacks: Bite (1d6)

Worgs are large, intelligent, and evil wolves.

## Wyverns

AC: 3[16] HD: 8 Move: 6  
Attacks: Bite or sting (1d6) (24 flying)  
Special: Poison, sting, flight

A wyvern is the two-legged relative of dragons. Wyverns have a poisonous sting at the end of their tails. Any round, the wyvern is 4 in 6 likely to use its tail.

## Zombies

AC: 8[11] or 7[12] w/shield  
HD: 2 Move: 6  
Attacks: Strike (1d6)  
Special: Immune to sleep, charm

Zombies are mindless creatures, the walking dead.

## Melee Weapon Table

Weapon	Damage	Cost
Axe, battle	1d6	5 gp
Club	1d6	0 gp
Dagger (throwable 10')	1d6-1	2 gp
Hammer, war	1d6	1 gp
Mace, heavy	1d6	10 gp
Spear (throwable 20')	1d6	1 gp
Staff, two-handed	1d6	0 gp
Sword, long	1d6	15 gp
Sword, short	1d6-1	8 gp
Sword, two-handed	1d6+1	30 gp

## To Hit Table

Character Class / Level	Target Armor Class [Ascending AC]						
	3	4	5	6	7	8	9
	[16]	[15]	[14]	[13]	[12]	[11]	[10]
Fighter 1, Cleric 1-2 Magic-User, Thief 1-3	16	15	14	13	12	11	10
Fighter 2, Cleric 3	15	14	13	12	11	10	9
Fighter 3	14	13	12	11	10	9	8

## Missile/Thrown Weapon Table

Weapon	Damage	RoF*	Range**	Cost
Bow	1d6	2	50ft	15 gp
Crossbow, light	1d6+1	1	60 ft	12 gp
Dagger	1d6-1	1	10ft	2 gp
Sling	1d6-1	1	40ft	0.2 gp
Spear	1d6	1	20ft	1 gp

\* Rate of fire per round

### Open Game Content

Open Game Content may only be Used under and in terms of the Open Game License (OGL).

This entire work is designated as Open Game Content under the OGL, with the exception of the trademarks "Swords & Wizardry," "S&W," "Mythmere Games," "FGG," "Frog God Games," and with the exception of all artwork. These trademarks, artwork, and the Trade Dress of this work (font, layout, style of artwork, etc.) are reserved as Product Identity.

### Open Game License

#### OPEN GAME LICENSE Version 1.0a

The following text is the property of Wizards of the Coast, Inc. and is Copyright 2000 Wizards of the Coast, Inc ("Wizards"). All Rights Reserved.

1. Definitions: (a) "Contributors" means the copyright and/or trademark owners who have contributed Open Game Content; (b) "Derivative Material" means copyrighted material including derivative works and translations (including into other computer languages), potation, modification, correction, addition, extension, upgrade, improvement, compilation, abridgment or other form in which an existing work may be recast, transformed or adapted; (c) "Distribute" means to reproduce, license, rent, lease, sell, broadcast, publicly display, transmit or otherwise distribute; (d) "Open Game Content" means the game mechanic and includes the methods, procedures, processes and routines to the extent such content does not embody the Product Identity and is an enhancement over the prior art and any additional content clearly identified as Open Game Content by the Contributor, and means any work covered by this License, including translations and derivative works under copyright law, but specifically excludes Product Identity. (e) "Product Identity" means product and product line names, logos and identifying marks including trade dress; artifacts; creatures characters; stories, storylines, plots, thematic elements, dialogue, incidents, language, artwork, symbols, designs, depictions, likenesses, formats, poses, concepts, themes and graphic, photographic and other visual or audio representations; names and descriptions of characters, spells, enchantments, personalities, teams, personas, likenesses and special abilities; places, locations, environments, creatures, equipment, magical or supernatural abilities or effects, logos, symbols, or graphic designs; and any other trademark or registered trademark clearly identified as Product identity by the owner of the Product Identity, and which specifically excludes the Open Game Content;

(f) "Trademark" means the logos, names, mark, sign, motto, designs that are used by a Contributor to identify itself or its products or the associated products contributed to the Open Game License by the Contributor (g) "Use", "Used" or "Using" means to use, Distribute, copy, edit, format, modify, translate and otherwise create Derivative Material of Open Game Content. (h) "You" or "Your" means the licensee in terms of this agreement.

2. The License: This License applies to any Open Game Content that contains a notice indicating that the Open Game Content may only be Used under and in terms of this License. You must affix such a notice to any Open Game Content that you Use. No terms may be added to or subtracted from this License except as described by the License itself. No other terms or conditions may be applied to any Open Game Content distributed using this License.

3. Offer and Acceptance: By Using the Open Game Content You indicate Your acceptance of the terms of this License.

4. Grant and Consideration: In consideration for agreeing to use this License, the Contributors grant You a perpetual, worldwide, royalty-free, non-exclusive license with the exact terms of this License to Use, the Open Game Content.

5. Representation of Authority to Contribute: If You are contributing original material as Open Game Content, You represent that Your Contributions are Your original creation and/ or You have sufficient rights to grant the rights conveyed by this License.

6. Notice of License Copyright: You must update the COPYRIGHT NOTICE portion of this License to include the exact text of the COPYRIGHT NOTICE of any Open Game Content You are copying, modifying or distributing, and You must add the title, the copyright date, and the copyright holder's name to the COPYRIGHT NOTICE of any original Open Game Content you Distribute.

7. Use of Product Identity: You agree not to Use any Product Identity, including as an indication as to compatibility, except as expressly licensed in another, independent Agreement with the owner of each element of that Product Identity. You agree not to indicate compatibility or co-adaptability with any Trademark or Registered Trademark in conjunction with a work containing Open Game Content except as expressly licensed in another, independent Agreement with the owner of such Trademark or Registered Trademark. The use of any Product Identity in Open Game Content does not constitute a challenge to the ownership of that Product Identity. The owner of any Product Identity used in Open Game

Content shall retain all rights, title and interest in and to that Product Identity.

8. Identification: If you distribute Open Game Content You must clearly indicate which portions of the work that you are distributing are Open Game Content.

9. Updating the License: Wizards or its designated Agents may publish updated versions of this License. You may use any authorized version of this License to copy, modify and distribute any Open Game Content originally distributed under any version of this License.

10. Copy of this License: You MUST include a copy of this License with every copy of the Open Game Content You Distribute.

11. Use of Contributor Credits: You may not market or advertise the Open Game Content using the name of any Contributor unless You have written permission from the Contributor to do so

12. Inability to Comply: If it is impossible for You to comply with any of the terms of this License with respect to some or all of the Open Game Content due to statute, judicial order, or governmental regulation then You may not Use any Open Game Material so affected.

13. Termination: This License will terminate automatically if You fail to comply with all terms herein and fail to cure such breach within 30 days of becoming aware of the breach. All sublicenses shall survive the termination of this License.

14. Reformation: If any provision of this License is held to be unenforceable, such provision shall be reformed only to the extent necessary to make it enforceable.

15. COPYRIGHT NOTICE  
Open Game License v 1.0a Copyright 2000, Wizards of the Coast, Inc.  
System Reference Document Copyright 2000-2003, Wizards of the Coast, Inc.; Authors Jonathan Tweet, Monte Cook, Skip Williams, Rich Baker, Andy Collins, David Noonan, Rich Redman, Bruce R. Cordell, John D. Rateliff, Thomas Reid, James Wyatt, based on original material by E. Gary Gygax and Dave Arneson.  
Swords & Wizardry Core Rules, Copyright 2008, Matthew J. Finch  
Swords & Wizardry Complete Rules, Copyright 2010, Matthew J. Finch  
Swords & Wizardry Light, Copyright 2016, Erik Tenkar Stiene

Change Log 1/10/17  
-Defined Hit Dice / HD under Constitution entry  
- Dagger or Staff as starting weapons for MU  
- Corrected thief starting armor AC numbers  
- Combat Table corrected for Fighter progression  
-Various typos corrected

Character Name \_\_\_\_\_

Player: \_\_\_\_\_

Race: \_\_\_\_\_

Class: \_\_\_\_\_

Level: \_\_\_\_\_

Adventures: 00|000

STRENGTH

DEXTERITY

CONSTITUTION

INTELLIGENCE

WISDOM

CHARISMA

ARMOR CLASS

HIT POINTS

SAVING THROW

To Hit AC  
ROLL D20  
ON OR ABOVE

3	4	5	6	7	8	9
[16]	[15]	[14]	[13]	[12]	[11]	[10]

Equipment and Treasure

---

---

---

---

---

---

---

---

Spells, Class and Race Abilities

Swords &  
Wizardry  
Light

---

---

---

---



Character Name \_\_\_\_\_

Player: \_\_\_\_\_

Race: \_\_\_\_\_

Class: \_\_\_\_\_

Level: \_\_\_\_\_

Adventures: 00|000

STRENGTH

DEXTERITY

CONSTITUTION

INTELLIGENCE

WISDOM

CHARISMA

ARMOR CLASS

HIT POINTS

SAVING THROW

To Hit AC  
ROLL D20  
ON OR ABOVE

3	4	5	6	7	8	9
[16]	[15]	[14]	[13]	[12]	[11]	[10]

Equipment and Treasure

---

---

---

---

---

---

---

---

Spells and Class Abilities

Swords &  
Wizardry  
Light

---

---

---

---

